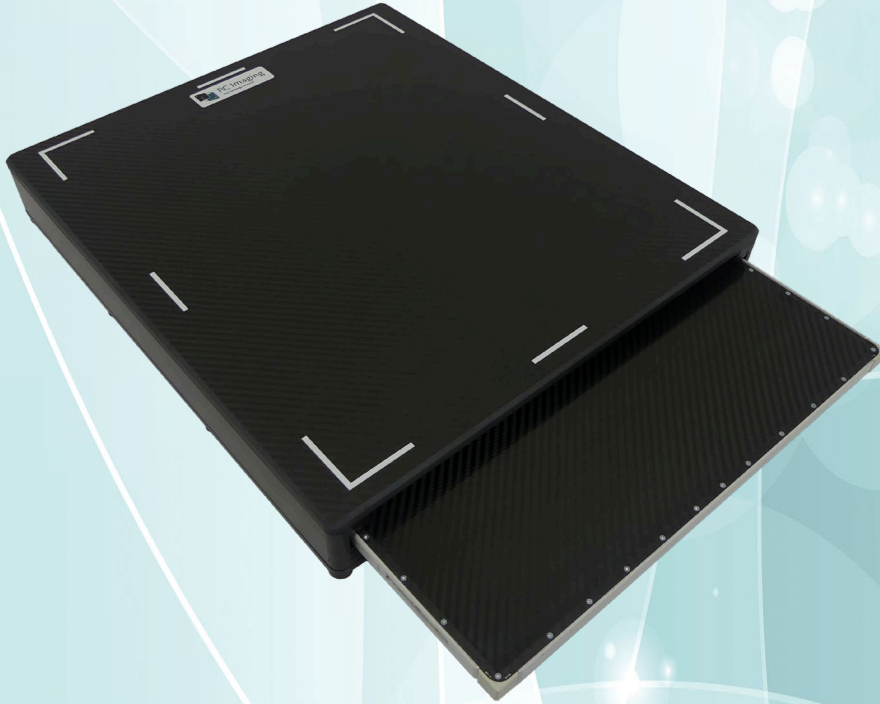




**RC Imaging**  
your radiology resource

## Weight Bearing Tunnel Express



*Our Weight Bearing Tunnel Express is designed to accommodate DR panels and traditional cassettes while protecting the DR panel or cassette from excessive weight and avoiding direct contact with the floor.*

*Our latest design is constructed of a high-density polyethylene frame and carbon fiber top, offering the highest degree of protection up to 6000 pounds. The built-in handle makes carrying a breeze with or without the DR panel in place.*

- *Universal slot size supports all wireless 14x17 in. ISO 4090 cassette sized DR panels and CR cassettes.*
- *Smooth glide rails allow for easy panel positioning ensuring image area is properly aligned*
- *6mm thick carbon fiber top supports up to 6000 pounds*
- *Non-skid rubber feet*
- *Printed target area*
- *Built-in handle for easy carrying with or without DR panel*